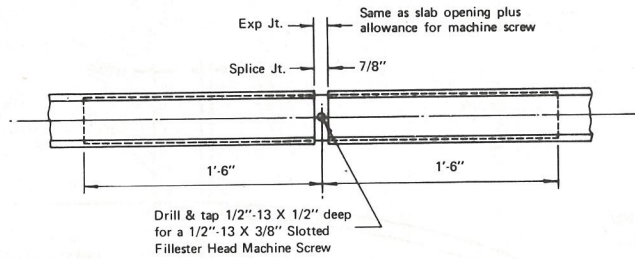
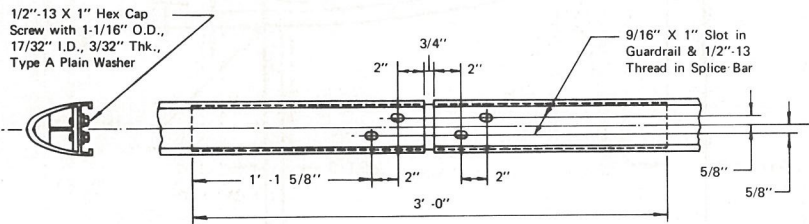


SECTION



BRIDGE RAIL SPLICE DETAIL RE-74

**Bridge
Rail
Splice** -76



GUARDRAIL SPLICE DETAIL RE-74

**Guardrail
Splice** -76

SPECIFICATIONS

Splice bar shall conform to A.S.T.M. B221, alloys 6061-T6 or 6351-T5 (minimum elongation 10%), and shall be threaded to meet the requirements of A.N.S.I. B1.1 Class 2B Tolerance.

Cap screws shall meet the requirements of A.S.T.M. A276, Type 430, and the dimensional requirements of A.N.S.I. B18.2.1. Washers shall meet the requirements of A.S.T.M. B209, alloy 2024-T3 alclad, and the dimensional requirements of A.N.S.I. B27.2 Type A Plain Washers.

Machine screws shall meet the requirements of A.S.T.M. A276, Type 316 Condition A, and the dimensional requirements of A.N.S.I. B18.6.3.

Dimensional tolerances not shown or implied are intended to be those consistent with the proper functioning of the part, including its appearance, and accepted manufacturing practices.

INTENDED USE

This section is used to splice rail element shown in Appendix A.7.1.

6 7/8" X 4 1/2" SEMI-ELLIPSE RAIL SPLICE

HM-TF-13

APPENDIX

A.7.2